

Customer :

customer

Customer part :

customer part

Comment :

Comment

S1=1.64

S2=2.42

Tmax=461

Tp S2=500.0

PI=0.4

HI=110

Sample =1656.60

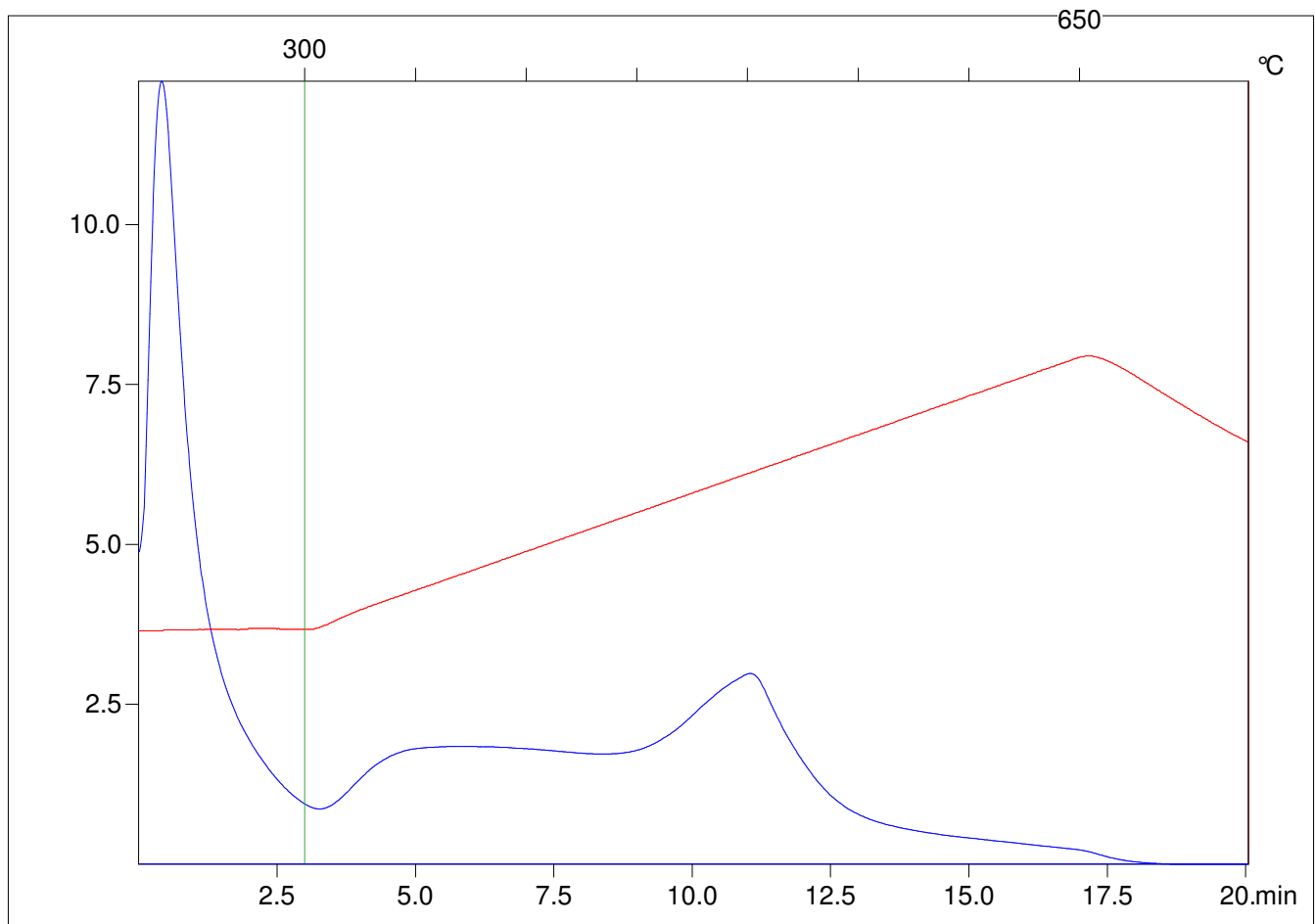
Method =Bulk Rock

Cycle=Basic

KFID(10*9)=1444

Qty =70.8

TOC=2.21



C:\VINC\PK1792\PK079.R00 : FID pyrolysis graphic

State

Pyro Status

Oxi Status